

日本温泉協会 80周年記念

The 80th Anniversary of the Japan Spa Association

The 62nd General Assembly and

International Thermalism/Scientific Congress

of the World Federation of Hydrotherapy and

Climatotherapy (FEMTEC) at Yokohama, Japan



3rd Circular

November 8-12, 2009

HOTEL NEW GRAND

10, Yamashita-cho, Naka-ku, Yokohama-shi, 231-0023



C o n t e n t

1 . Congress Outline.....	3
2. Time Table.....	4
2.1 Lectures and oral presentations at the Rainbow Room.....	4
2.2 Poster presentations and exhibitions at the Phoenix Room.....	4
3. Session Program.....	5
3.1 Congratulatory Address.....	5
3.2 Guest speakers.....	5
3.3 Oral Session (Medicine).....	6
3.4 Oral Session (Natural Sciences).....	6
3.5 Oral Session (Tourism/Development).....	6
3.6 Oral Session (Human Sciences).....	7
3.7 Oral Session (General).....	7
3.8 Special Lecture.....	7
3.9 Poster Session.....	7
4. Registration&Remitment Information.....	8
5. Social Events Information.....	9
5.1 Welcoming eve celebration.....	9
5.2 Celebration of the 80 th Anniversary of the Japan Spa Association.....	9
5.3 Joint Dinner of the FEMTEC and the Japan Spa Association.....	9
5.4 Farewell Party.....	9
5.5 Excursion to Hakone.....	9
6. FEMTEC meetings information.....	9
6.1 Board meeting.....	9
6.2 General Assembly.....	9
6.3 Awarding Ceremony of the FEMTEC.....	9
7. Hotel accommodation.....	9
8. Excursion to Kusatsu (Optional).....	9
9. Guidance at the Narita International Airport.....	10
10. Bus services.....	10
11. Hotel Map.....	11
12. Floor Map.....	12
13. Access.....	13
14. Supporters' Organizations.....	14
15. Organogram.....	15

Contacts

Registration

Please contact to Mr.Nunoyama(femtec2009@spa.or.jp)

Social Events / Excursion / Accommodation

Please contact to Ms.Kaku(femtec2009@spa.or.jp)

Exhibition

Please contact to Mr.Hamada(PXP07656@nifty.com)

Shinkawa Bldg., 1-1-7, Shinkawa, Chuo-ku, Tokyo 104-0033 Japan

Tel:+81-3-5941-8610 / Fax: +81-3-5941-8612

1 . Congress Outline

The 80th Anniversary of the Japan Spa Association

The 62nd General Assembly and International Thermalism/Scientific Congress of the World Federation of Hydrotherapy and Climatotherapy (FEMTEC) at Yokohama, Japan

Date : November 8 (Sun.) - November 12 (Thu.), 2009

Venue: Hotel New Grand

10, Yamashita-cho, Naka-ku,

Yokohama-shi , Kanagawa 231-0023,

Japan

TEL: (Int+81) 045-681-1841

Organizer: The Japan Spa Association

Official Languages: English and Japanese

(simultaneous interpretation will be provided at Oral Presentations)

Theme: Environment, Health and Tourism through Onsen

Scientific Program: November 9 (Mon.) – 10 (Tue)

Guest Speeches/ Oral Presentations/ Poster Session

Welcome Party: November 8 (Sun.)

Diner Party: November 9 (Mon.)

Trip to Hakone: November 10 (Tue.)–11 (Wed.)

Farewell Party: November 11

Post-Conference Excursion: November 11 (Wed.) – 12(Thu.)

Secretariat: the Organization Committee of Japan for the FEMTEC Congress in 2009

The Japan Spa Association

3rd Floor, Shinkawa Bldg., 1-1-7, Shinkawa, Chuo-ku,

Tokyo 104-0033 Japan

Tel: +81-3-5941-8610 Fax: +81-3-5941-8612

2. Time Table

2.1 Lectures and oral presentations at the Rainbow Room

Time \ Date	Nov.8(Sun)	Nov.9(Mon)	Nov.10(Tue)	Nov.11(Wed)	Nov.12(Thu)
8:00 – 9:00			8:30–12:00		
9:00 – 10:00		9:00–9:40 opening ceremony	Oral presentations 1) Medicine Coffee break	9:00–10:30 FEMTEC General Assembly	9:30–11:30 Visit at Kusatsu
10:00 – 11:00		10:00–12:00 presentations on the current state of thermalism of FEMTEC member countries	2) Natural Sciences 3) Social Sciences	10:30–12:30 Visit at Hakone Volcano	
11:00 – 12:00					
12:00 – 13:00				12:30–17:00 Travel from Hakone to Kusatsu	
13:00 – 14:00			13:30–14:40 Oral presentations		
14:00 – 15:00		14:00–16:00 presentations on the current state of thermalism of FEMTEC member countries	4) Tourism 5) General		
15:00 – 16:00	15:00 Registration		15:00–17:30 Travel from Yokohama to Hakone		
16:00 – 17:00					
17:00 – 18:00					
18:00 – 19:00			18:00–19:00 Awarding Ceremony		

2.2 Poster presentations and exhibitions at the Phoenix Room

Time \ Date	Nov.8(Sun)	Nov.9(Mon)	Nov.10(Tue)	Nov.11(Wed)	Nov.12(Thu)
8:00 – 9:00		8:00–9:00 Preparations			
9:00 – 10:00		9:00–15:00 ·Poster session ·Exhibitions of foreign spa resorts	9:00–13:30 ·Poster session ·Exhibitions of foreign spa resorts	9:00–10:30 FEMTEC General Assembly	9:30–11:30 Visit at Kusatsu
10:00 – 11:00		13:30–14:00 Core time of the poster presentations	13:00–13:30 Core time of the poster presentations	10:30–12:30 Visit at Hakone Volcano	
11:00 – 12:00					
12:00 – 13:00				12:30–17:00 Travel from Hakone to Kusatsu	
13:00 – 14:00			13:30–14:30 Removal of Posters		
14:00 – 15:00					
15:00 – 16:00	15:00 Registration		15:00–17:30 Travel from Yokohama to Hakone		
16:00 – 17:00					
17:00 – 18:00					
18:00 – 19:00			18:00–19:00 Awarding Ceremony		

Goods related with the Japanese hot springs are displayed at the lobby of the 2nd floor in the Main Building.

3. Session Program

November 9 (Mon.)

3.1 Congratulatory Address

- 9:00- 9:05 Address of welcome
(K.. Watanuki / Japan / Chairman of the Organizing Committee)
- 9:05- 9:10 Address of welcome
(S. Matsuzawa / Japan / Governor of Kanagawa Prefecture)
- 9:10- 9:15 Address of welcome
(F. Hayashi / Japan / Mayor of City of Yokohama)
- 9:15- 9:25 Congratulatory speech
(N. Storozhenko / Russia / President of the FEMTEC)
- 9:25- 9:35 Introduction of the FEMTEC's executives, guest speakers and participating countries
- 9:35-10:00 coffee break*

3.2 Guest speakers

- 10:00-10:20 LI-01 Hydrotherapy in Europe: An old science,for a modern medicine
(U. SOLIMENE /Italy)
- 10:20-10:40 LI-02 Innovation and Development for Chinese Hot Spring Tourist Industry
(Ch. Wang / People's Republic of China)
- 10:40-11:00 LI-03 Taiwan, the museum of hot spring
(H. HSU / Taiwan)
- 11:00-11:20 LI-04 the current state of the thermalism in Cuba
(F. CAMPORREDONDO / Cuba)
- 11:20-11:40 LI-05 HUNGARY THERMAL COUNTRY Spa - developments based on medicinal waters
(I. NEMETH / Hungary)
- 11:40-12:00 LI-06 A new experience in the ownership of spa, medical and wellness management in Italy
(G. ROSSI / Italy)
- 12:00-13:30 lunch time*
- 14:00-14:20 LI-07 Current Status of Korean Hot Spring
(K. CHO / Republic of Korea)
- 14:20-14:40 LI-08 Current state of thermalisme/balneotherapy in Romania - Tradition and actuality
(O. SURDU / Romania)
- 14:40-15:00 coffee break*
- 15:00-15:20 LI-09 Balneology: the basic achievements and development prospects
(A. RAZUMOV / Russia)
- 15:20-15:40 LI-10 Current State of the thermalism in Tunisia
(F. DAOUAS / Tunisia)
- 15:40-16:00 LI-11 Hot Springs and Spas in Japan
(M. OYAMA / Japan)

November 10 (Tue.)

3.3 Oral Session (Medicine)

- 8:30- 8:42 O-M-1 Treatment of varicose veins: experimental - clinical study on the effects of hidromassage with salsobromiodine water and comparison with medical therapy (E. IPPOLITO / Italy)
- 8:43- 8:55 O-M-2 Possible role and effects of organic compounds in spa waters (C. VARGA / Hungary)
- 8:56- 9:08 O-M-3 Genotoxicity studies on Hungarian peloids using Ames test and comet assay (K. SZENDI / Hungary)
- 9:09- 9:21 O-M-4 TOJI: unexplored natural healing experience in hot springs (onsen) (M. ENDO / Japan)
- 9:22- 9:34 O-M-5 Balneology - where to? History and current trends in Romania (O. SURDU / Romania)
- 9:35- 9:47 O-M-6 Serem level of proinflammatory cytokines in patients with ankylosing spondilitis treated with cold mud ointment (D. PROFIR / Romania)
- 9:48-10:00 O-M-7 OXIDATIVE STRESS AFTER MUD APPLICATIONS (V. MARIN / Romania)
- 10:00-10:10 coffee break*

3.4 Oral Session (Natural Sciences)

- 10:10-10:22 O-N-1 A historical development of chemical analysis of mineral spring waters in japan from Edo to early Meiji era (M. OOSAWA / Japan)
- 10:23-10:35 O-N-2 Effects of Sulfur Hot Spring Water with Reductive Characteristic on the Skin (S. OKOUCHI / Japan)
- 10:36-10:48 O-N-3 An overview of the origin, occurrence, and hydrochemical characteristics of geothermal waters in South Korea (S. Yun / Republic of Korea)
- 10:48-11:00 coffee break*

3.5 Oral Session (Tourism/Development)

- 11:00-11:12 O-T-1 Alternative energy to oil by hot water of remaining heat abolition use for hot spring (H. INAGAWA / Japan)
- 11:13-11:25 O-T-2 German experience in bathing and spa culture (M. STEPIENS / Japan)
- 11:26-11:38 O-T-3 The Usage of 'Onsen' Hot Spring for Tourism Purpose (T. URA / Japan)
- 11:39-11:51 O-T-4 Affecting the body energy balance through the LOHAS healthy plan in Taiwan King's Resort & SPA (H. HSU / Taiwan)
- 12:00-13:30 Lunch time*

3.6 Oral Session (Human Sciences)

- 13:30-13:42 O-H-1 Transformation of Achi, tiny village into a hot spring resort
(M. HAMADA / Japan)
- 13:43-13:55 O-H-2 Hot springs of China found in historical documents
(J. CHEN / People's Republic of China)

3.7 Oral Session (General)

- 13:56-14:08 O-G-1 How the artificial carbon dioxide hot-springs has been developed and
applied in Japan
(M. FUKATANI / Japan)
- 14:09-14:21 O-G-2 The strategic choices of innovation for the economy of the thermalism in the
future
(G. GURNARI / Italy)

3.8 Special Lecture

- 14:21-14:33 Long-term Assessment of Hot Spring Waters in Hakone Volcano
(J.KIKUGAWA / Japan)

November 9 (Mon.) - November 10 (Tue.)

3.9 Poster Session

- P-M-1 Comparison of Thermo-Elevating Effects among Three kinds of Hot Water Containing
NaCl, NaHCO₃ and CO₂
(M. MAEDA / Japan)
- P-M-2 Oxygen Consumption by The Artificial High-Concentration CO₂ Hot Water Bathing
(M. MAEDA / Japan)
- P-M-3 TOJI: TOJI in Japan: why it is unique? A poster presentation
(M. ENDO / Japan)
- P-M-4 Sterilization Effects of Legionella pneumophila inner Circulating Spa by using Nano-Filter
(S. ISHIBASHI / Japan)
- P-M-5 Effects of underwater exercise on quality of life and psychological states in Kawane Spa:
a randomized controlled trial (Kawane Spa Study)
(S. HAYASAKA / Japan)
- P-M-6 New experimental methods for studying medical muds samples
(G. GELLERT / Hungary)
- P-N-1 Changes in hot spring sources of Kusatsu-spa, Gunma Prefecture, Japan, and the sources
Utilization
(H. NAGASHIMA / Japan)
- P-N-2 A study on the brown-colored hot springs in the area around Tokyo Bay
(M. IMAHASHI / Japan)
- P-H-1 Classification of Hot Spring-Related Cultures in Japan
(H. NUNOYAMA / Japan)
- P-H-2 Some Legal Aspects of Recent Hot Spring Troubles in Japan
(K. FUJITA / Japan)
- P-T-1 Hot Springs that Satisfy Tourists
(H. MASUDA / Japan)
- P-T-2 A Study of the Key Success Factors of Hot Spring Tourism Area
(J. HSU / Taiwan)
- P-T-3 A study on the Construction structural strength in Taiwan Hengchun hot spring
environments
(J. CHANG / Taiwan)

- P-T-4 Durability of structural concrete in hot spring environments
(H. WANG / Taiwan)
- P-T-5 A study on Pozzolanic materials to enhance the Construction structural properties in hot spring environments
(W. HUANG / Taiwan)
- P-T-6 THE TOURISMSCAPE OF PALANGA: A SEASIDE RESORT AND ITS HINTERLAND
(P. RAMUNAS / Lithuania)
- P-T-7 NEW TECHNOLOGIES SUPPORTING THE QUALITY' OF THERMAL BATH & SPA OFFER
(G. GURNARI / Italy)
- P-G-1 The Natural Hot Spring Certification Signboard
(JAPAN SPA ASSOCIATION / Japan)

Core time for the poster presentations: 13:30-14:00 Nov/09, 13:00-13:30 Nov/10

Attention :

Every speaker is requested to use computer files of the PowerPoint 2003 of Microsoft or those of older versions, when he/she uses the PowerPoint with a projector.

Files made in PDF format or JPG format are also usable.

The size of the poster panel is 85cm by 180cm.

4. Registration&Remitment Information

Registration: Please fill out the registration form on the website of the FEMTEC and forward by e-mail to the Japan Spa Association(femtec2009@spa.or.jp)

http://femteconline.org/index.php?option=com_content&view=article&id=59:worldcommunication-programfemtec2009-2nd-circular&catid=37:2009-assembly&Itemid=64

Deadline: 2009/Oct/31(participation without presentation only)

Fee: q.v.the website above-mentioned

Payment: Remittance through the bank below mentioned is acceptable.

Bank account:

the name of the bank :SUMITOMO MITSUI BANKING CORPORATION

the name of the branch :NIHONBASHIHIGASHI BRANCH

SWIFT code : SMBCJPJT

the account number : 034-7623549

the account holder's name : International Hot springs Congress Organizing Committee

the address of the bank:1-13-12,NIHONBASHI KAYABACHO,CHUO - KU, TOKYO, JAPAN

the payee: International Hot springs Congress Organizing Committee

the address of the payee: 1-1-7 SHINKAWA,CHUO - KU, TOKYO, JAPAN

the telephone number of the payee: +81- 3-5941-8610

The registration fee for the Congress at Yokohama should be done in the way that the "bank commission for remittance" (commission of the bank from which the applicant remit money) and "Paying bank charge"(commission of the bank to which the applicant remit money) ought to be borne by the applicant's side.

Cancellation charges:

a) more than 9 days prior to 2009/Nov/08 - 10%

b) 1 day prior to 2009/Nov/08 - 20%

c) on the day of 2009/Nov/08 - 80%

d) without notice - 100%

5. Social Events Information

5.1 Welcoming eve celebration

Date&time: 2009/Nov/8, 19:00-21:00

Place : the Admiral Perry's Room, 3rd floor in the Tower Building

Fee : included in the registration fee

5.2 Celebration of the 80th Anniversary of the Japan Spa Association

Date&time: 2009/Nov/9, 18:00-19:00

Place : the Rainbow Room, 2nd floor in the Main Building

Attendee : members of the Japan Spa Association and the guests from the FEMTEC

5.3 Joint Dinner of the FEMTEC and the Japan Spa Association

Date&time: 2009/Nov/9, 19:00-21:00

Place : the Admiral Perry's Room, 3rd floor in the Tower Building

Fee : included in the registration fee

5.4 Farewell Party

Date&time: 2009/Nov/10, 19:00-21:00

Place : Hotel Daihakone

Fee : included in the registration fee

5.5 Excursion to Hakone

Date&time: 2009/Nov/11, 10:30-13:00

Visit : fumaroles and other volcanic phenomenon

6. FEMTEC meetings information

6.1 Board meeting

Date&time: 2009/Nov/9 16:00-17:30

Place : the Starlight Room in the Main Building

6.2 General Assembly

Date&time: 2009/Nov/11 9:00-10:30

Place : Hotel Daihakone

6.3 Awarding Ceremony of the FEMTEC

Date&time: 2009/Nov/10, 18:00-19:00

Place : Hotel Daihakone

7. Hotel accommodation

The registration fee includes the accommodations at Yokohama and Hakone.

8. Excursion to Kusatsu (Optional)

Departure time from Hakone : 2009/Nov/11 13:00

Arrival time at Kusatsu : 2009/Nov/11 18:00

Date&time of visit: 2009/Nov/12, 9:00-11:00

Visit place: strongly acidic hot water gushing out of the resource

Fee : ¥30,000 (Room for single use), ¥25,000 (Room for twin use)

9. Guidance at the Narita International Airport

The information desk for the participants opens at noon at Terminal 1 and Terminal2 Nov/8.

Useful websites:

Narita International Airport

<http://www.narita-airport.jp/en/>

Hotel New Grand

<http://www.hotel-newgrand.co.jp/english/>

10. Bus services

Bus services from the Narita International. Airport on the 8th November are as follows:

1) Free bus services to the Hotel New Grand for the FEMTEC participants

2009/Nov/8

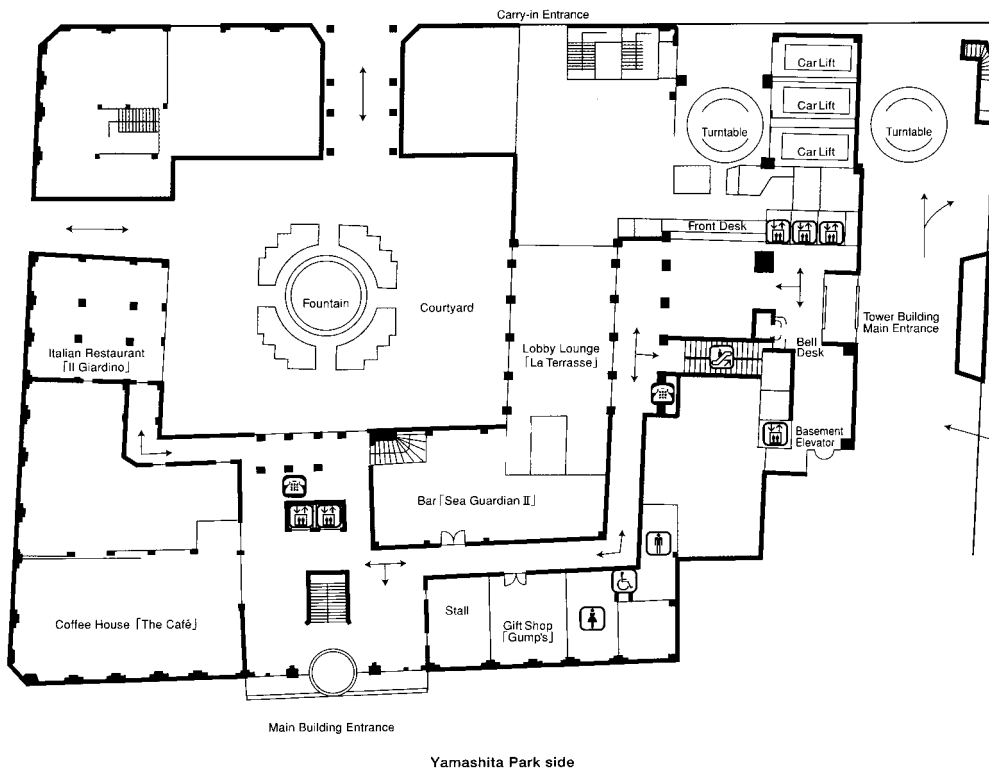
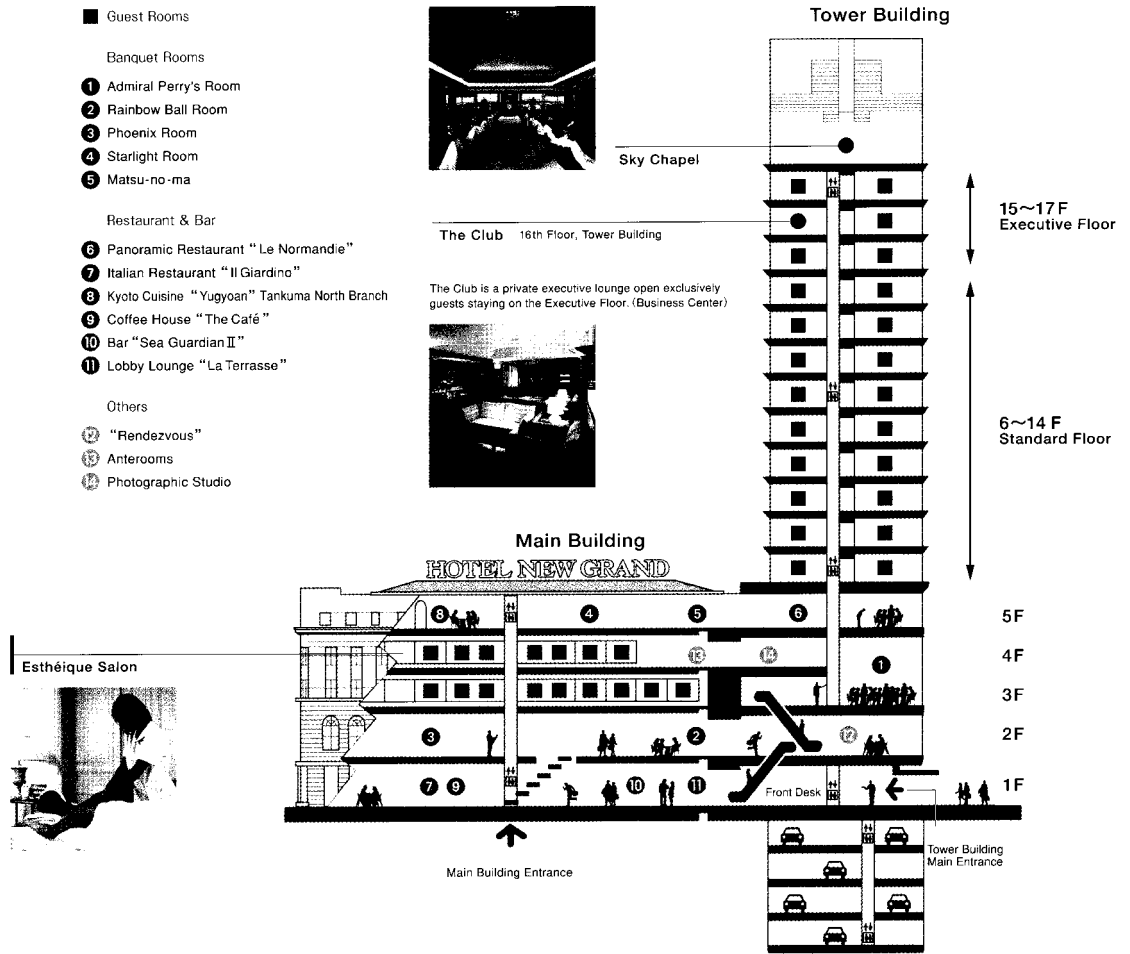
Narita Second Terminal	Narita First Terminal	Hotel New Grand
13:00	13:05	15:00
15:00	15:05	17:00
17:00	17:05	19:00

2) Pay Limousine bus service to Hotel New Grand (¥3,500=\$38.6)

2009/Nov/8

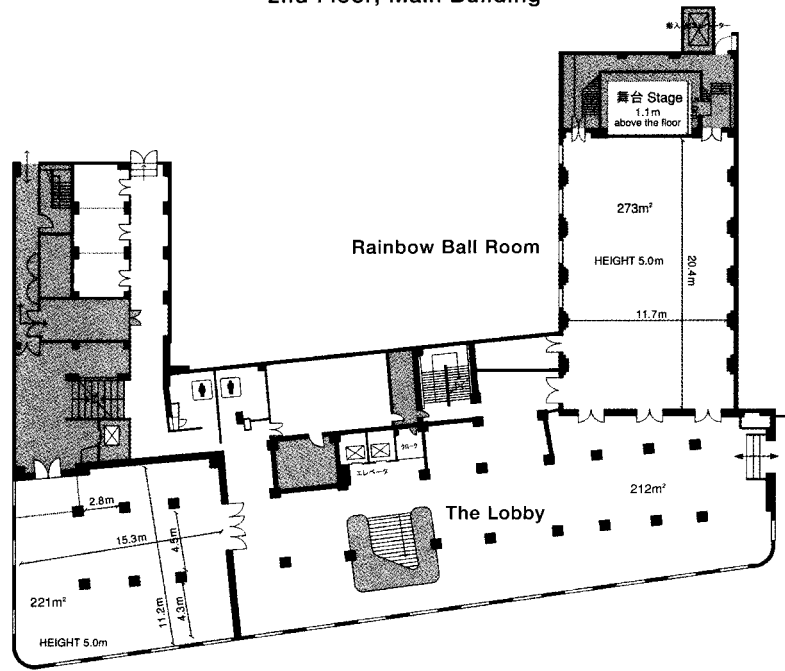
Narita Second Terminal	Narita First Terminal	Hotel New Grand
16:05	16:10	18:05
18:05	18:10	20:05
20:05	20:10	22:05

11. Hotel Map



12. Floor Map

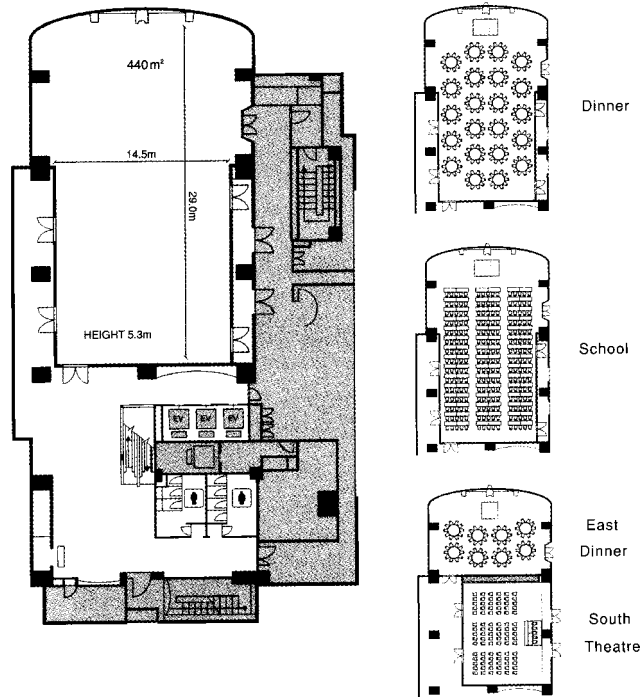
2nd Floor, Main Building



Phoenix Room

3rd Floor, Tower Building

Admiral Perry's Room



13. Access

From nearby Railway stations to HOTEL NEW GRAND

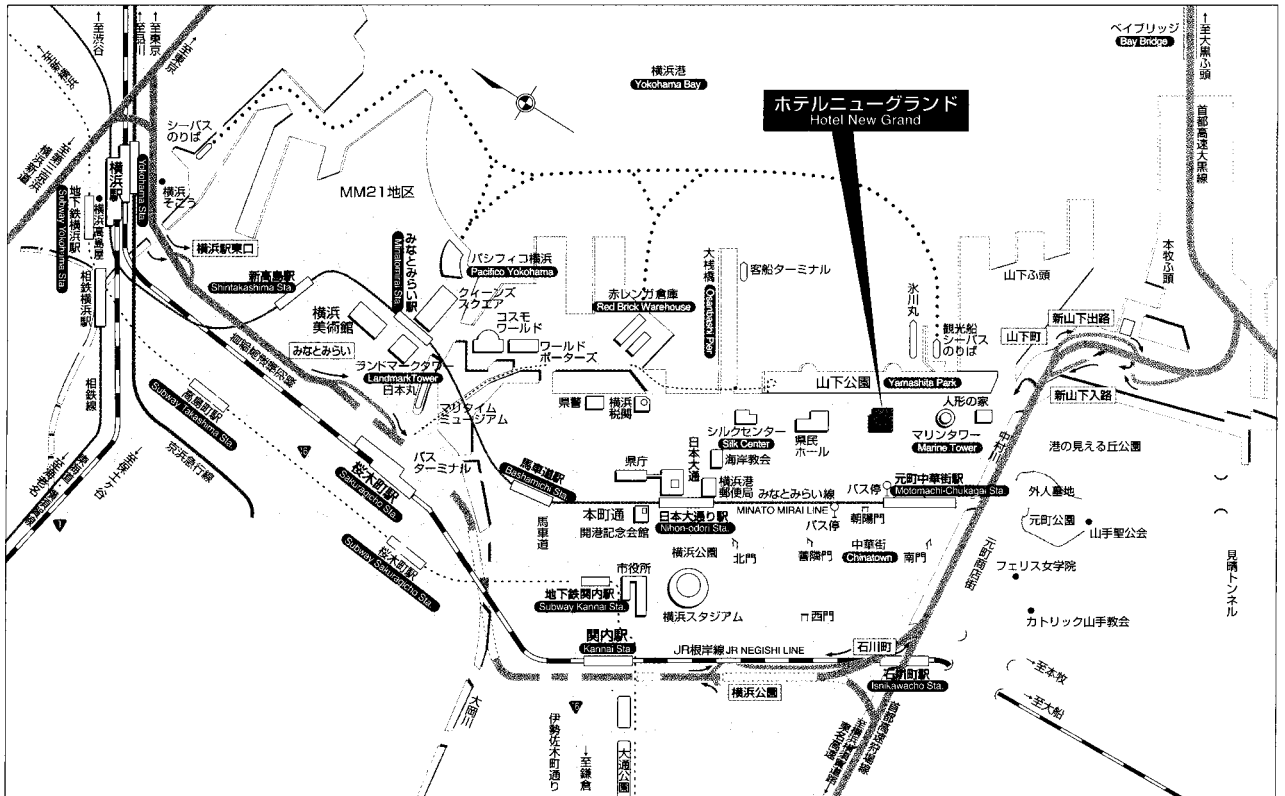
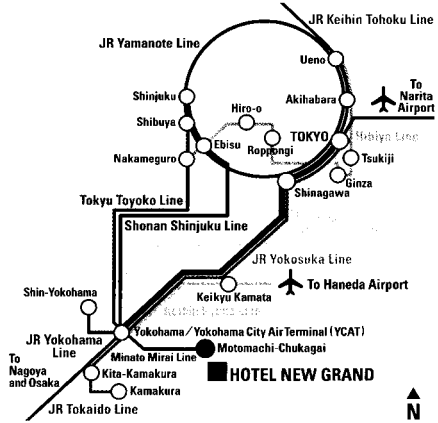
- 1 minute's walk from exit #1 of Motomachi-Chukagai station on Minato Mirai Line.

From Airport

- **Haneda Airport by Limousine Bus** (By way of YCAT*)
Limousine Bus approx. 30 minutes to YCAT, and by taxi approx. 10 minutes.
*YCAT (Yokohama City Air Terminal) is just next to Yokohama Station.
- **Haneda Airport by Train**
Keihin Kyuko Line Via Keikyu-Kamata Station by the express approx. 30 minutes to Yokohama station. And Minato Mirai Line approx. 8 minutes to Motomachi-Chukagai station.
- **Narita Airport by Limousine Bus** (By way of YCAT)
Limousine Bus approx. 90 minutes to YCAT, and by taxi approx. 10 minutes.
- **Narita Airport by Train**
JR Line Narita Express approx. 90 minutes to Yokohama station.
And Minato Mirai Line approx. 8 minutes to Motomachi-Chukagai station.

From Major Railway stations

- **Yokohama Station** on Minato Mirai Line approx. 8 minutes to Motomachi-Chukagai station
- **Shibuya Station** on Tokyu Toyoko Line Via Yokohama station by the express approx. 35 minutes to Motomachi-Chukagai station.
- **Tokyo Station** on JR Tokaido Line approx. 30 minutes to Yokohama station.
- **Shinagawa Station** on JR Tokaido Line approx. 20 minutes to Yokohama station.



14. Supporters' Organizations

Ministry of the Environment
Japan Tourism Agency
Kanagawa Prefecture
City of Yokohama
Hakone town
Kusatsu town
Gero City
Spa Association of Hokkaido
Spa Association of Miyagi Prefecture
Spa Association of Yamagata Prefecture
Spa Association of Fukushima Prefecture
Joint Association of hot spring protection of Tochigi Prefecture
Spa Association of Gunma Prefecture
Spa Association of Nagano Prefecture
Spa Association of Gifu Prefecture
Spa Association of Shizuoka Prefecture
Spa Association of Aichi Prefecture
Spa Association of Wakayama Prefecture
Spa Association of Kumamoto Prefecture
Japan Environment Association
National Parks Association of Japan
Natural Parks Foundation
Earth Water & Green Foundation
Japan Tourism Association **
Tourism Industry Association of Japan
Japan Travel Bureau Foundation
Japan Ryokan & Hotel Association
Japan Ryokan Association
All Japan Ryokan Association
Council of National Spa Resorts
Society for conversation of hidden Japanese hot springs
Hot Spring Research Center
The Society of Engineers for Mineral Spring, Japan
Spa managing Engineer's Association in Japan
Japanese Council of Centralized Management of hot springs
Nasu Tourism Association
Kusatsu Tourist Association
NOZAWAONSEN RYOKAN-HOTEL Cooperative business association
Hakone Town Tourist Association
Hakone Hot spring Ryokans and Hotels Association
Management Council of Steam Hot Spring Wells
Gero-Spa Tourist Association
Gero-Spa Ryokan's & Hotels association
Cooperative Business Association of Gero Spa
Cooperative Union of Gero Spa
The Japanese Society of Hot Springs Sciences
The Japanese Society of Balneology, Climatology and Physical Medicine
Regional Science Association of Spa , Japan
The Hot Spring Society
The Embassy of France
The Embassy of Germany
The Embassy of Hungary
The Embassy of the People's Republic of China
The Embassy of the Republic of Korea
Taipei Economic and Cultural Office in Japan
The Embassy of Russian Federation
The Embassy of Romania
The Embassy of the Republic of Tunisia

15. Organogram

Members of the organizing committee for the 80th Anniversary of the Japan Spa Association and the 62nd General Assembly and International Thermalism/Scientific Congress of the World Federation of Hydrotherapy and Climatotherapy (FEMTEC) at Yokohama, Japan

Chairman

Kunihiko WATANUKI President of the Science Committee of the
Japan Spa Association
Professor emeritus of Tokyo University

Vice-Chairmen

Takao ISHIMURA Head Vice-President of the Japan Spa Association
Masao OYAMA President of the Japanese Society of Hot Spring
Yukishige MORI Vice-President of the Japan Spa Association
Yoshiyasu SATO Vice-President of the Japan Spa Association
Nobuhiko HIROKAWA Vice-President of the Japan Spa Association

Executive members

Kasho AIKAWA Board member of Academic Council
Takeshi AZUMA Board member of Academic Council
Shigeko INOKUMA President of the Japanese Society of Balneology,
Climatology and Physical Medicine
Yasuo KANROJI Standing Director of the Japan Spa Association
Ken TAKESHITA President of the Hot Spring Society
Junji YAMAMURA President of the Regional Science Association of Spa,
Japan

Auditors

Takuya ASHIZAWA Certified public accountant
Hitoshi KURABAYASHI Member of the Japanese Society of Balneology,
Climatology and Physical Medicine
Jun SATO Councilor of the Japanese Society of Hot Spring
Sciences

General Secretary

Hirokazu NUNOYAMA General Secretary of the Japan Spa Association

Address for correspondence

The Japan Spa Association
1-1-7 SHINKAWA, CHUO-KU, TOKYO, JAPAN
TEL: +81- 3-5941-8610
FAX: +81- 3-5941-8612